

Linn Technical Support

Updating DS products to Bute software

Revision 1.0 June 11th 2008 Technical.Support@Linn.co.uk

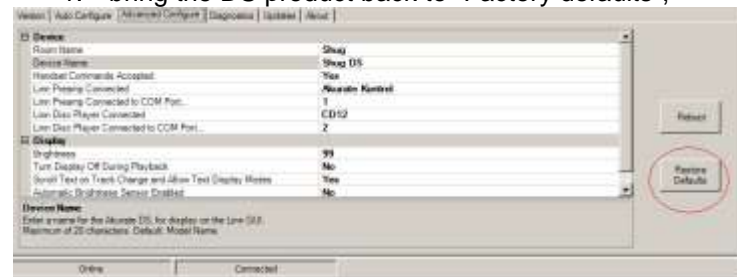
Distribution: Linn Internal/Trade



The DS products that have been recently updated to the Bute flash code may exhibit some control problems.

The solution is

1. bring the DS product back to "Factory defaults",

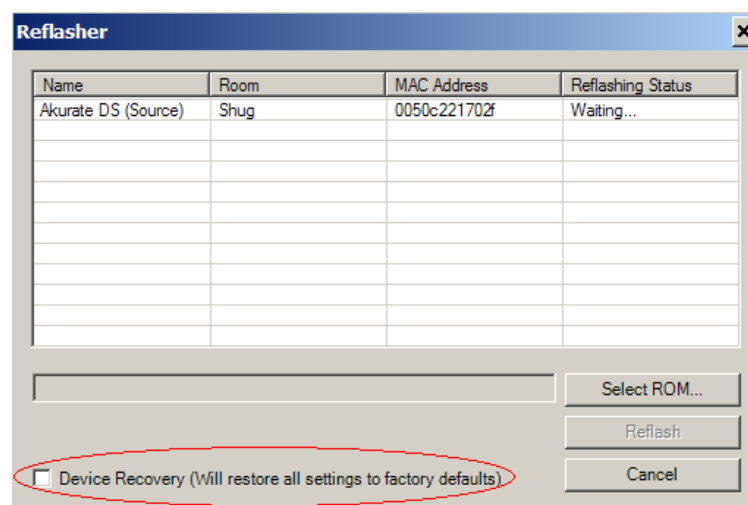


2. Reboot the DS, this may take a few minutes as nothing appear to happen



3. The use the LINNCONFIG to reset the DS product as required. This procedure makes sure that there are no hidden configuration setting that may cause problems with the Linn DS product.

A better solution is to ensure that factory defaults are reset during the first reflash to BUTE software as below.



END